

ATEJA FLOORING

COLLECTION - 02

Easy Installation

Does not require special skills and equipment in installation.

Easy Maintenance

Worry free and easy regular maintenance.

3 Designs & 15 Colors

*Three modern minimalist **flooring** designs with the combination of earth and natural colors, suitable for any spaces.*





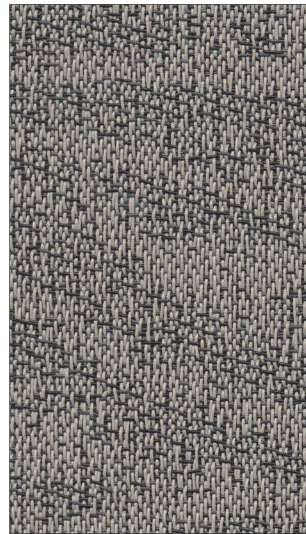
In the frame: *Camile 140, Camile 161, Camile 162*



Camile 140



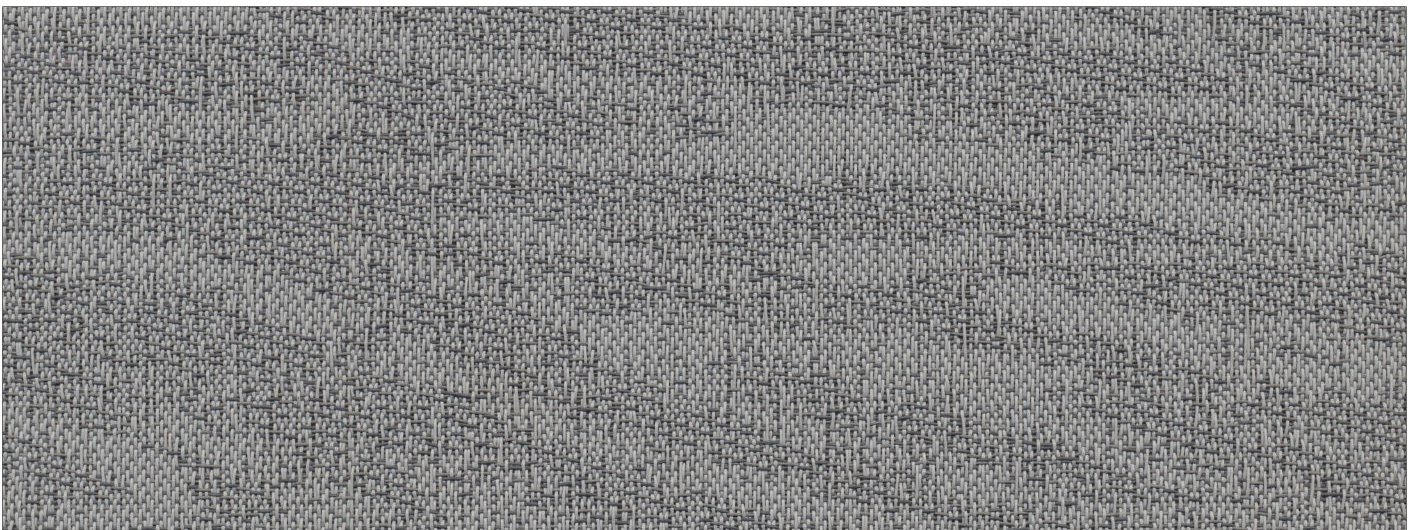
Camile 162



Camile 180



Camile 161



Camile 163



In the frame: *Drevo 140, Drevo 160, Drevo 180*



Drevo 162



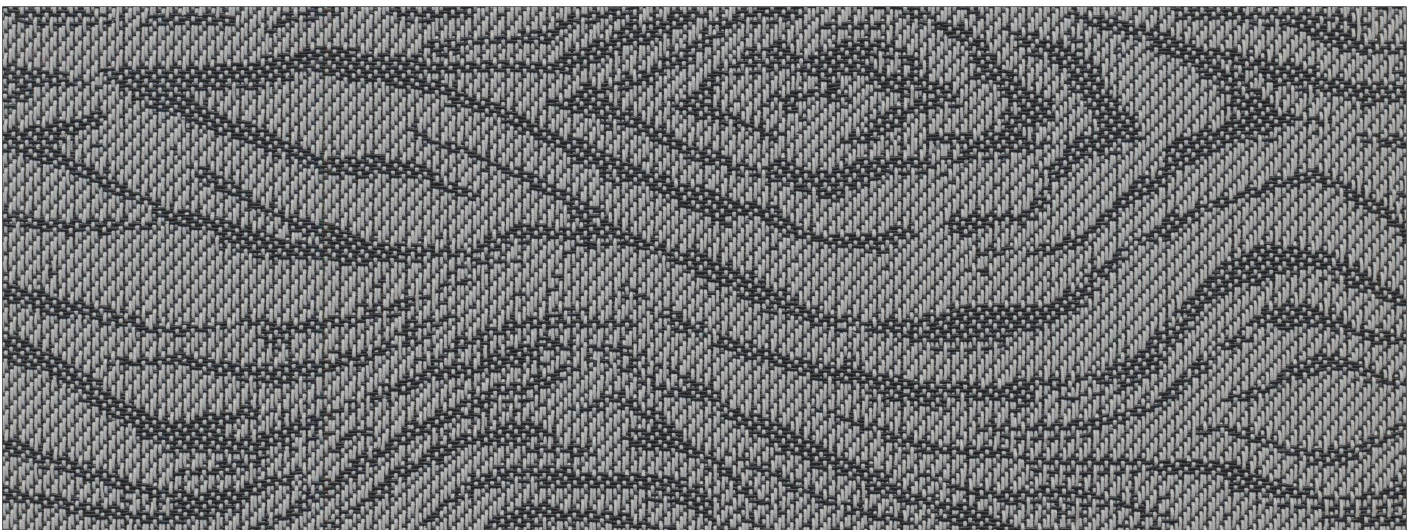
Drevo 140



Drevo 180



Drevo 161



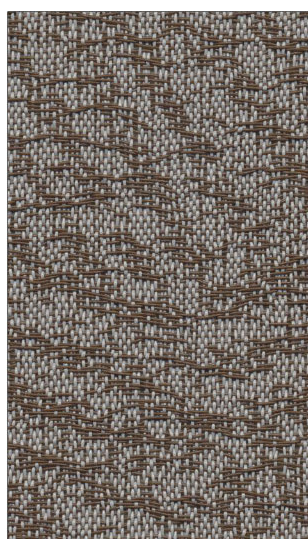
Drevo 160



In the frame: *loma 162, loma 180, loma 181*



loma 181



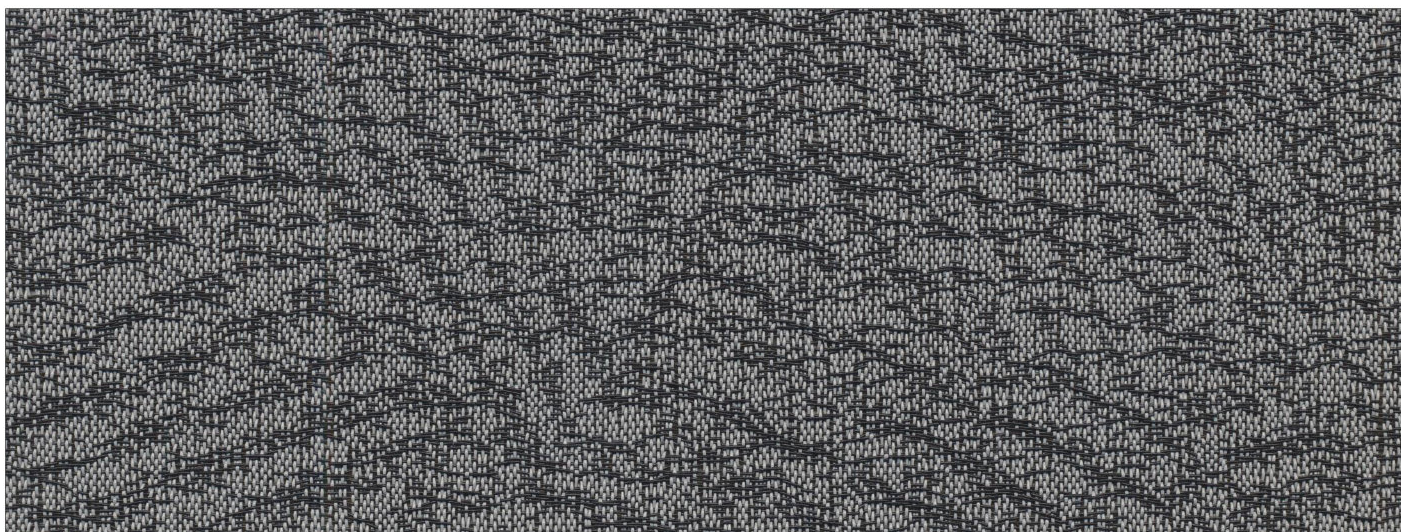
loma 180



loma 162



loma 163



loma 160



The New World of Flooring

When art meets technology, ATEJA® Flooring is born. A recent innovation from ATEJA® as a substitute for conventional carpets. ATEJA® Flooring is completed not only with modern design but also with high tech features.

Recommended for use in any places such as private residences, office, hotel, villas, cafés and restaurants or other public places.

Stock Keeping Unit Items

Packed on box consist of 20 standard size tiles (50 cm x 50 cm) for 5 m² coverage area.

Special Request

We can provide custom cut size to accommodate your project needs with a template such as:

• Rolls (150 cm width) • 100 x 100 cm • 25 x 100 cm

Technical Data

Weight	2.100 gr/m ²	Composition	15% Polyester, 85% PVC
Thickness	5 mm		
Body Voltage / Assessment of Static Electrical Propensity (ISO 1815)	0.1 kV (Pass)	Color Fastness to Light ISO 105 B:02	Grade 8
Residual Indentation of Static Load EN 433:1994	0.37 mm	Airborne Sound Absorption EN ISO 345:2003	0.05
Impact Sound Insulation (Acoustic) ISO 140-8:1997	Delta Lw = 20Db	Dimension Stability BS EN 23999:2012	0.06% (X+Y Direction)
Anti Slip Property EN 13893:2002	0.6	Curling After Exposure to Heat BS EN 23999:2012	0.0 mm
Castor Chair Resistance EN 425:2002	Continuous Use	Smoke Density ASTM E 662	DS Value Non Flaming Mode = 191 DS Value Flaming Mode = 425
Thermal Resistance EN 12667:2001	0.0065 m ² K/W	Fire Rating or Reaction to Fire EN 13501-1 ISO 11925-2: 2010 EN ISO 9239-1	Pass - Class BFL - S1 Pass Class BFL - S1
Thermal Conductivity EN 12667:2001	0.0575 W/m.K		

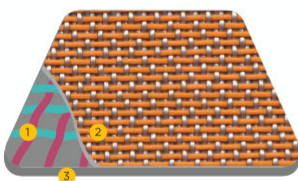
The image within this sample card is just an illustration, the product application can be adjusted independently according to your creativity. The design in one pack is not continuous or repeat.



AGTex, yang terbaik dalam teknologi coating untuk Technical Textiles

PT ATEJA GRACE TEXINDO adalah manufaktur pelopor teknologi *coating* dalam dunia *Technical Textile* di Indonesia. Sebagai bagian dari ATEJA GROUP, perusahaan tekstil internasional yang sudah berdiri sejak 1947, kami terus berusaha maju dan menciptakan inovasi untuk mengikuti perkembangan zaman.

Berbekal pengalaman dan teknologi yang dimiliki, kami menghadirkan inovasi produk *ATEJA FLOORING*. Diciptakan dengan spesifikasi teknis yang mumpuni, *ATEJA FLOORING* hadir sebagai terobosan baru dalam dunia material penutup lantai.



1. PVC Woven Fabric
2. PVC Coated Fabric
3. Durable Foam

PVC WOVEN VINYL

Dengan teknologi *triple-layers*, *ATEJA PVC WOVEN VINYL FLOORING* diciptakan dengan teknologi *coating* terbaik dan terdiri dari *PVC Woven Fabric*, *PVC Coated Fabric*, dan *Durable Foam* menghasilkan jenis flooring yang tahan lama.

Dilengkapi dengan beberapa keunggulan seperti stabilitas dimensi, *anti-slip*, dan *impact sound insulation* sampai ± 20 dB.

Added Values



Easy to Clean



High Color
Fastness



Castor Chair
Resistance



Anti Slip



Dimensional
Stability



Impact Sound
Insulation up to
20dB



Fire Rating
Pass - Class B_{fl}- S1



Anti Fray

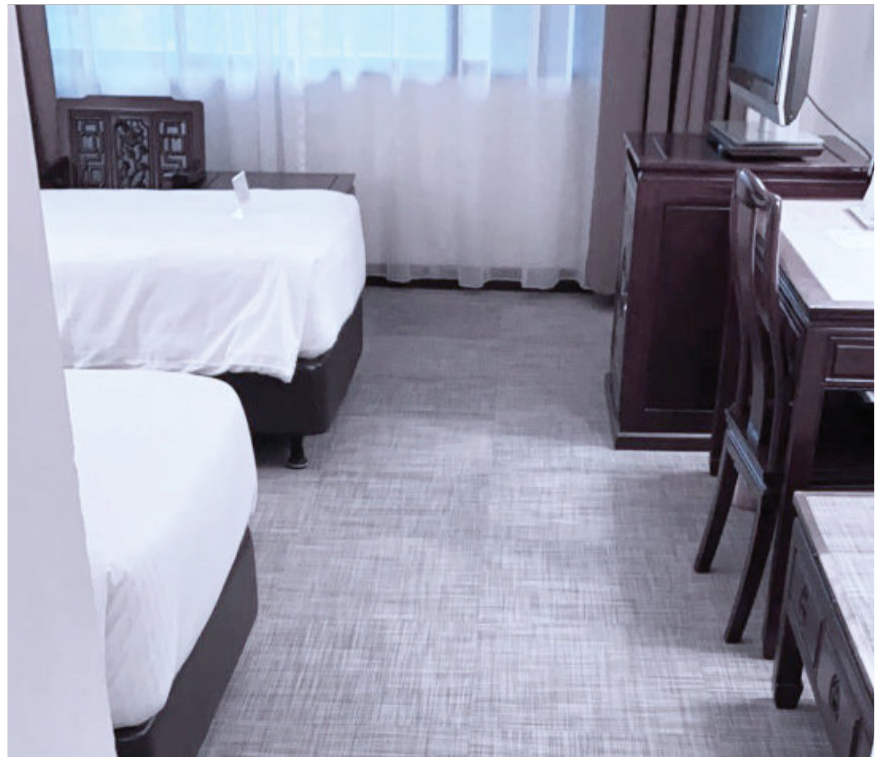


Thermal Comfort

Hotel Grand Pacific Singapore

Design Used : Saka, Hyams

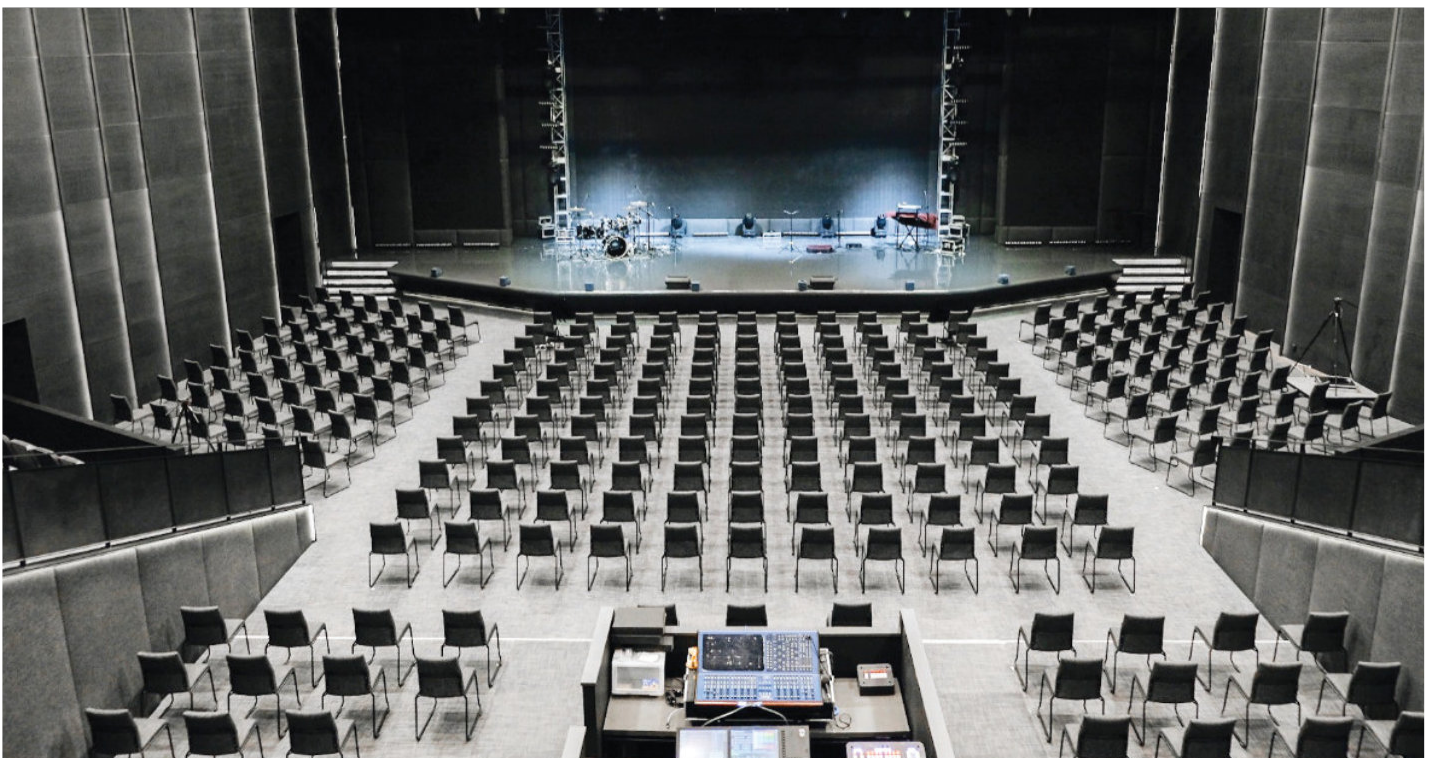
Quantity : 2.510 m²



GII Corner Stone

Design Used : Saka

Quantity : 1.076 m²



Bandung Giri Gahana Golf & Resort

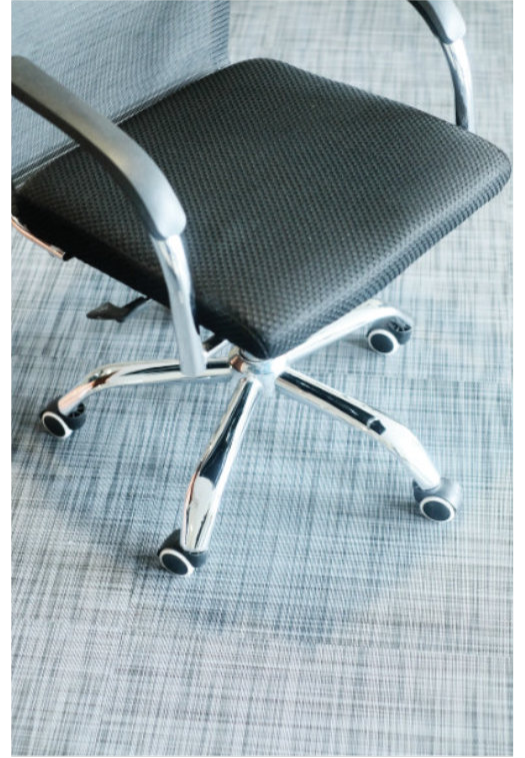
Design Used : Hyams

Quantity : 325 m²



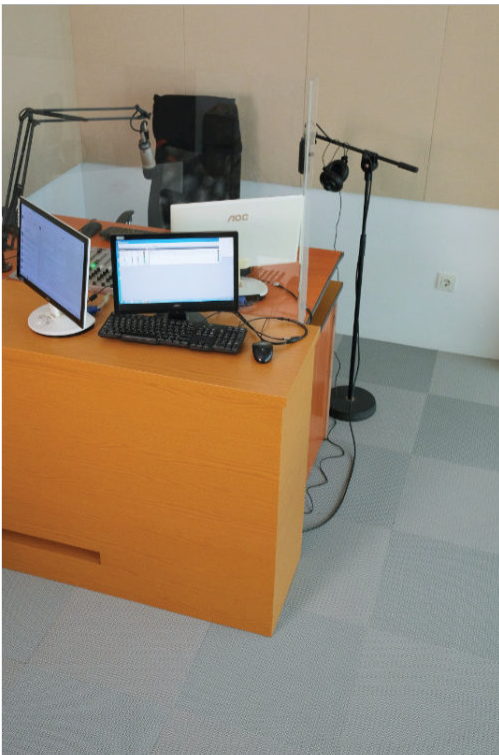
GII Setrasari

Design Used : Hyams, Saka



Radio Suara Indah

Design Used : Darana



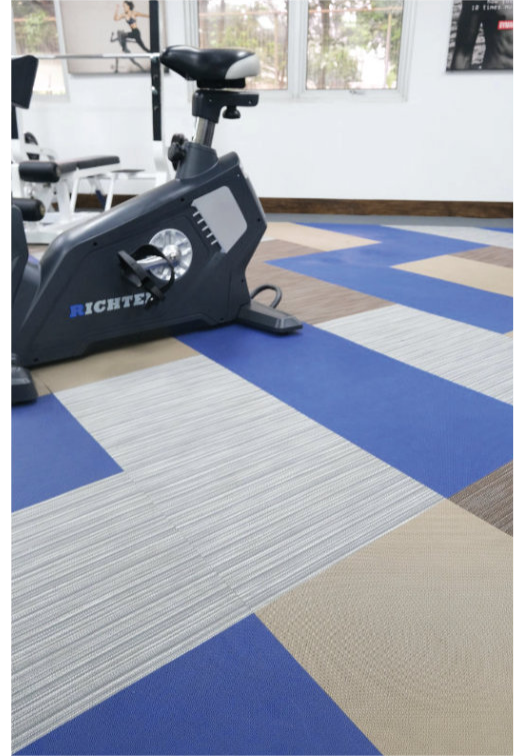
Sunproof Marketing Office

Design Used : Carola, Darana, Hyams



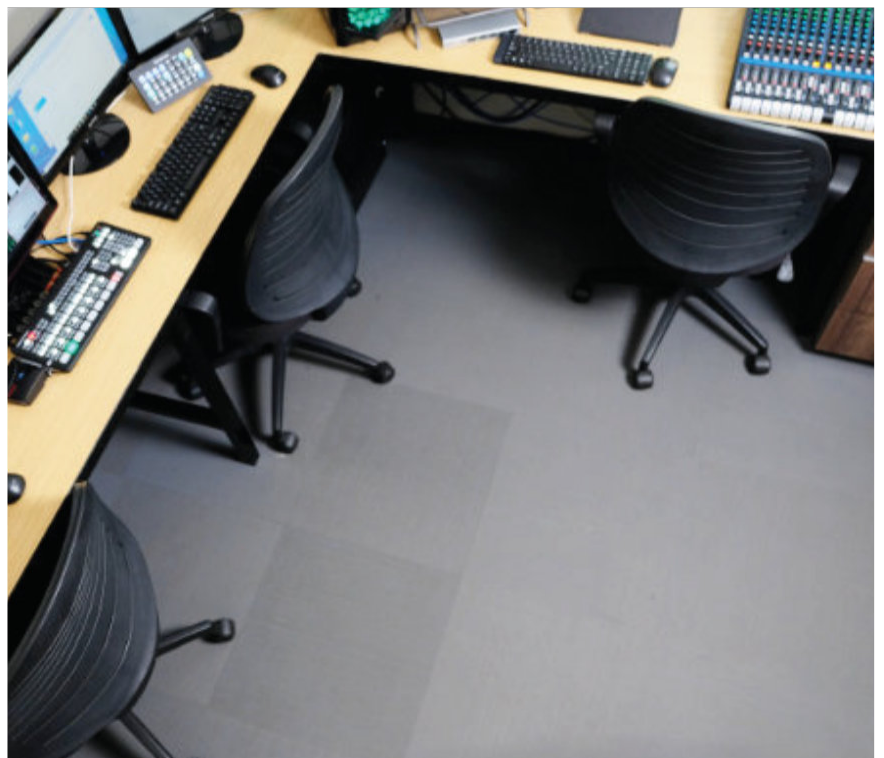
Sport Gymnastic

Design Used : Kanaka, Saka



Sekolah Tinggi Teologi Bandung

Design Used : Hyams





For more information about Manual for the Handling of Ateja® Flooring, please visit our website by scanning the QR code.



Jl. Raya Batujajar KM 2,8 - Padalarang (40553), Bandung, West Java, Indonesia

Website: www.ateja.co.id **E-mail:** ateja@ateja.co.id **Phone:** +62 22 68 66 322 **Fax:** +62 22 68 66 320